

Visit NASA.gov  
Connect  
Contact Us

Glossary  
Site Map

NASA Science Live Search

GO!

Home | Big Questions | Earth | Heliophysics | Planets | Astrophysics | Missions | About Us | Science News

For Researchers | Citizen Scientists | For Educators | For Students | For Kids

Home → Science News

Science News

Science@NASA Headline News

News & Features

Press Releases

RSS Feeds

Related Content

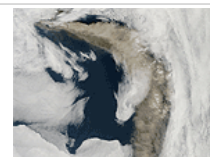
- [NASA Breaking News](#)
- [Jet Propulsion Laboratory \(JPL\) ...](#)
- [Goddard Space Flight Center ...](#)
- [Astrobiology Magazine](#)
- [Universe Today](#)
- [NASA's Earth Observatory](#)
- [Email Updates](#)
- [Year in Review](#)

## SCIENCE NEWS

### ASH AND STEAM CONTINUES TO BILLOW FROM ICELANDIC VOLCANO

May 7, 2010  
**News & Features**

NASA Satellite Sees a Darker Ash Plume From Iceland Volcano



### KEPLER WEBSITE WINS WEBBY AWARD!

May 7, 2010  
**News & Features**

Kepler: A Search for Habitable Planets was selected as an Official Honoree for the Science category in The 14th Annual Webby Awards.



### THE ASTRONOMY OF MOTHER'S DAY

May 6, 2010  
**Science@NASA Headline News — 2010**

Do you dare wake Mom at dawn ... on Mother's Day? Under the circumstances, she might not mind. May 9th begins and ends with a lovely display of stars and planets.



### RECORD FLOODS IN TENNESSEE

May 6, 2010  
**News & Features**

Record-breaking rain triggered severe and widespread flooding across Tennessee starting on May 1, 2010.



### NASA AIDS FORECASTERS TRACKING VOLCANO ASH PLUME

May 6, 2010  
**News & Features**

Since 2007 NASA-funded scientists have provided the United States' advisory centers with regular regional updates on volcanic ash and sulfur dioxide plumes using data from NASA's Aura satellite.



### ASPHALT LAKE POINTS TO POSSIBILITY FOR LIFE ON TITAN

May 6, 2010  
**News & Features**

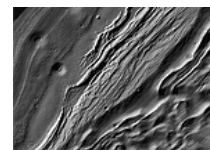
Single-celled organisms found in lakes of liquid asphalt may indicate the type of extreme life that could exist on Saturn's moon, Titan.



### NEW MARTIAN VIEWS FROM ORBITING CAMERA SHOW DIVERSITY

May 6, 2010  
**News & Features**

New images from more than 750 recent observations of



- Freedom of Information Act
- Budgets, Strategic Plans and Accountability Reports
- The President's Management Agenda
- Privacy Policy and Important Notices
- Inspector General Hotline
- Equal Employment Opportunity Data Posted Pursuant to the No Fear Act
- Information-Dissemination Priorities and Inventories
- USA.gov
- ExpectMore.gov

NASA Official: Ruth Netting  
 Send us your comments!  
 Last Updated: May 18, 2010

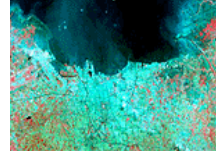
- Glossary
- Site Map
- Adobe Reader

Mars by an orbiting telescopic camera testify to the diversity of landscapes there.

**THE LIFE AND TIMES OF JAKARTA**

**May 6, 2010**  
**News & Features**

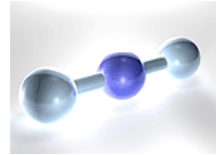
State of Flux features images of different locations on planet Earth, showing change over time periods ranging from centuries to days. Some of these effects are related to climate change, some are not. Some document the effects of urbanization, or the ravage of natural hazards such as fires and floods. All show our planet in a state of flux.



**SENSITIVE SIDE**

**May 5, 2010**  
**News & Features**

A little extra carbon dioxide in the air may, unfortunately, go further towards warming Earth than previously thought.



**RESURRECTED MAMMOTHS ARE COOL**

**May 5, 2010**  
**News & Features**

Using ancient DNA preserved in mammoth bones, scientists have learned how the extinct species survived extreme cold. The study could provide new insights into the history of life on Earth.



Previous

[1](#) [2](#) [3](#) [4](#) [5](#) [6](#) [7](#) [8](#) [9](#) ... [321](#)
Next