



Jet Propulsion Laboratory
California Institute of Technology

+ View the NASA Portal

JPL HOME

EARTH

SOLAR SYSTEM

STARS & GALAXIES

SCIENCE & TECHNOLOGY

MISR

Multi-angle Imaging SpectroRadiometer

HOME

MISSION

GALLERY

EDUCATION

NEWS

ABOUT US

INTERNAL



Publications

Get Data

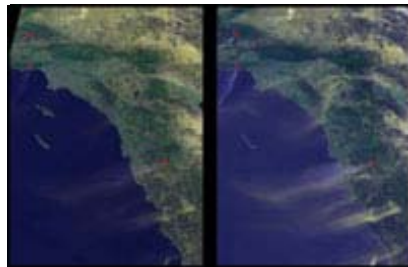
Field Campaigns

Terra Mission

Mystery Quiz

Ask a Question

Suggest an Image



[MISR Multi-angle Views of Sunday Morning Fires](#)

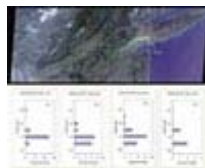
Hot, dry Santa Ana winds began blowing through the Los Angeles and San Diego areas on Sunday October 21, 2007. Wind speeds ranging from 30 to 50 mph were measured in the area, with extremely low relative

humidities. These winds, coupled with exceptionally dry conditions due to lack of rainfall resulted in a number of fires in the Los Angeles and San Diego areas, causing the evacuation of more than 250,000 people. >>



[Satellites Track Human Exposure to Fine Particle Pollution](#)

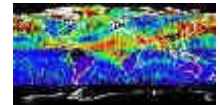
When it comes to air pollution, the smallest size can do the most harm. More than a decade ago, a pioneering study by Harvard's School of Public Health showed that one of the most dangerous forms of air pollution is particulate matter 10 microns (about 0.0004 inch) or less in size. Called PM 10, this tiny airborne debris is a product of burning fossil fuels. It can be found wherever there are cars, boilers and power plants. Fires and dust storms are also sources. >>



[Smoke Plume Dispersal from the World Trade Center Disaster](#)

The collapse of the World Trade Center on September 11, 2001, and the fires that followed produced a noxious smoke plume, a complex mixture of tiny airborne particles and gases. Determining where humans may have been exposed to these contaminants and the amount of their exposure is very difficult. >>

VISUALIZATIONS



World maps and animations

[Aerosols](#)

[Land surface](#)

[Top-of-atmosphere](#)

[Albedo](#)

[Radiance](#)



3D globe animations

(Requires [Java & Java 3D](#))

[Aerosols](#)

[Land Surface](#)

[Top-of-atmosphere](#)

[Albedo](#)

[Radiance](#)

Where on Earth...?

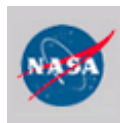


QUIZZES

[Click here](#)



Privacy/Copyright



Contact Us: [Ask MISR](#)

Last Updated: 05 January 2009

Copyright © 1996-2007, California Institute of Technology
ALL RIGHTS RESERVED

Based on U.S. Government sponsored research

