



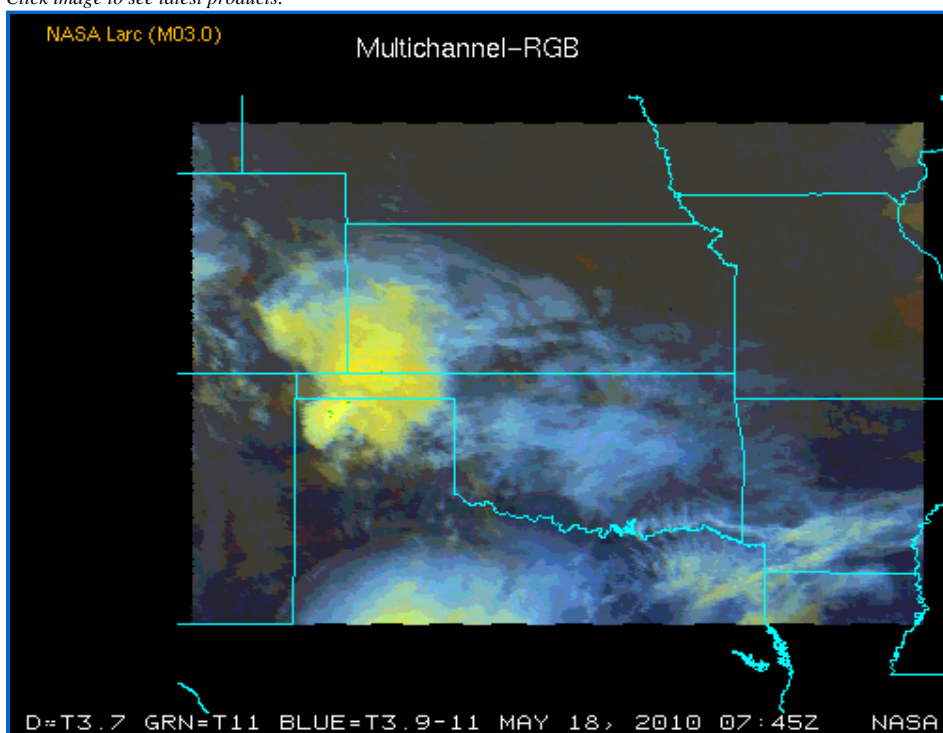
## NASA - Patrick Minnis Group - NASA Langley Cloud and Radiation Research

NASA Langley Satellite Support of ARM SpartICus Field Experiment 2010

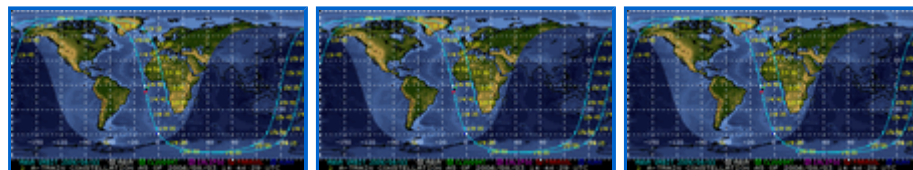
NASA Langley Satellite Support of ARM SpartICus Field Experiment 2010

### Latest GOES-12 Image Processed

*Click image to see latest products.*



### Current Location of A-Train Satellites (updated every 30 sec)



A-Train

Calipso

CloudSat

- [+ NASA Home](#)
- [+ NASA LaRC Home](#)
- [+ Science Directorate](#)
- [+ Minnis Group Home](#)

## ARM SpartICus Experiment - NASA Langley

+ ARM SpartICus Official Home

SEARCH LANGLEY

 + GO

### NASA Fact

NASA's Environmental Research Aircraft and Sensor Technology program (known as "ERAST") develops pilotless airplane technology. It also works on making science instruments very small so that they can be carried on remote-controlled aircraft.

- More NASA facts...



- NASA Official: Patrick Minnis
- Website Curator: Louis Nguyen
- + Contact Langley
- + Contact Team Members
  
- Team Login