

Specimen Label

Sonar[®] RTU

Aquatic Weed Herbicide For Ponds



- Controls Duckweed and many others!
- Controls the Entire Weed, Roots and All!
- Guaranteed to Control Aquatic Weeds!

Active Ingredient

Fluridone: 1-methyl-3-phenyl-5-[3-(trifluoromethyl)phenyl]-4(1H)-pyridinone.....3.79%

Other Ingredients.....96.21%

TOTAL.....100.00%

One quart contains 0.08 pounds of fluridone.

Precautionary Statements

Keep Out of Reach of Children CAUTION

Causes moderate eye irritation. Avoid contact with eyes or clothing. Wear safety glasses. Wash thoroughly with soap and water after handling and before eating, drinking, chewing gum, using tobacco or using the toilet.

Environmental Hazards

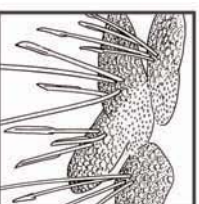
Do not apply directly to water except as specified on the label. Do not allow pesticide to enter or run off into storm drains, drainage ditches, gutters or surface waters. Applying this product in calm weather when rain is not predicted for the next 24 hours will help to ensure that wind or rain does not wash pesticide off the treatment area. Trees and shrubs growing in water treated with Sonar RTU may occasionally develop chlorosis.

Product Facts

This product controls aquatic weeds.

Aquatic Weeds Controlled

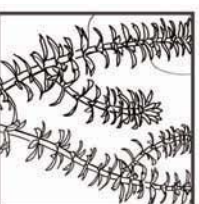
Controls most types of nuisance aquatic weeds



Duckweed



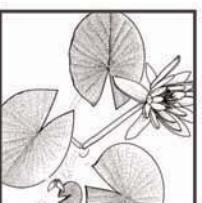
Milfoil



Hydrilla



Coontail



Lily

(See complete list under the directions for use section of this label)

How Sonar RTU Works

Sonar RTU is applied directly to a pond and the active ingredient, fluridone, is quickly absorbed by aquatic plants. Any product not absorbed by the treated plants is broken down by sunlight. Treated plants begin to turn white and/or wilt 3 to 6 weeks after application.

Where to Apply

Natural or man-made ponds with little or no outflow.

Questions, Comments or Information



Call 1-866-869-8521



www.lakelawmandpond.com

Shake well before using.

EPA Reg. No. 67690-48
FPL011309

Made in the U.S.A.

[®]Trademark of SePRO Corporation.
SePRO Corporation 11550 North Meridian Street, Suite 600, Carmel, IN 46032 U.S.A.

Directions for Use

It is a violation of Federal Law to use this product in a manner inconsistent with its labeling. Read all Directions for Use carefully before applying.

Shake well before using.

Important General Use Information and Precautions

- There are no fishing, swimming, livestock/pet consumption restrictions for this product.
- **DO NOT** apply more than a total of 3 quarts Sonar RTU per acre foot in a single growing season.
- **DO NOT** use Sonar RTU treated water for irrigation of established turf, crops, or ornamental plants for 30 days after final application. Do not irrigate seedling grasses, crops, or other new plantings for 60 days after final treatment. For specific irrigation use questions, call **SePRO Corporation at 1-866-869-8521**.
- **DO NOT** apply this product through any type of irrigation system.

- It is important that Sonar RTU stay in contact with the target weeds for a minimum of 45 days. Rapid water movement or any condition which results in dilution of Sonar RTU in treated water may reduce its effectiveness.
- **Obtain Required Permits:** Consult with appropriate state or local water authorities before applying this product. If the pond is not privately owned by yourself be sure to check with state or local water authorities who have regulatory authority over public water as permits may be required by state or local public agencies.

When and How to Apply

- Apply during sunny, dry, non-windy conditions.
- Apply when weeds are actively growing. Best results typically achieved by starting applications just as weeds have started to grow.
- Apply Sonar RTU directly into the water either in one location or multiple locations and Sonar RTU will mix throughout the pond.

- Sonar RTU should be used with Captain* Liquid Copper Algaecide if algae infestation is present at time of application.

- Sonar RTU should be applied according to the schedule below, with the initial application followed by two additional applications at three-week intervals. **Table 1** should be used for general aquatic weed control. **Table 2** should be used for the additional benefit of partial control of watermeal.

TABLE 1

Sonar RTU Application Rates & Schedule (4 Foot Average Pond Depth)		
	Amount applied per one-half (1/2) acre pond	Amount applied per one (1) acre pond
Initial Application (Day 1)	2 quarts	4 quarts
2nd Application (Day 21)	1 quart	2 quarts
3rd Application (Day 42)	1 quart	2 quarts

- For ponds with average depth and size different than found in **Table 1**, utilize the following formulas and round the calculated result up to the nearest one-half (1/2) quart.

Initial Application (Day 1):

Pond Acres x Pond Average Depth (in feet) = Number of Sonar RTU Quarts to Apply

Example: 0.6 Acre Pond x 3.0 Foot Average Depth = 1.8 which is rounded up to 2.0 Quarts Sonar RTU to be applied.

2nd (Day 21) and 3rd (Day 42) Applications:

Pond Acres x Pond Average Depth (in feet) x 0.5 = Number of Sonar RTU Quarts to Apply

Example: 0.6 Acre Pond x 3.0 Foot Average Depth x 0.5 = 0.9 which is rounded up to 1.0 Quart Sonar RTU to be applied.

TABLE 2**Sonar RTU Application Rates & Schedule**For Partial Control of Watermeal†
(4 Foot Average Pond Depth)

	Amount applied per one-half (1/2) acre	Amount applied per one (1) acre
Initial Application (Day 1)	3 quarts	6 quarts
2nd Application (Day 2†)	1.5 quart	3 quarts
3rd Application (Day 42)	1.5 quart	3 quarts

- **DO NOT** apply more than a total of 3 quarts Sonar RTU per acre foot in a single growing season.

NOTE: An acre foot of water = 1 surface acre of water with an average depth of 1 foot. (Example, a 1 acre pond with average water depth of 4 feet would contain 4 acre-feet of water.)

TABLE 3**Aquatic Weeds Controlled by Sonar RTU**

Bladderwort	Naiad
Coontail, common	Paragrass
Duckweed, common	Pondweeds, most
Egeria or Brazilian Elodea	Spatterdock
Elodea, common	Watermilfoils, most
Fanwort or Cabomba	Water-lily
Hydrilla	

TABLE 4**Aquatic Weeds Partially Controlled by Sonar RTU**

Alligatorweed	Smartweed
American lotus	Southern watergrass
Barryardgrass	Spikerush
Cattail	Tapegrass or American eelgrass
Giant cutgrass	
Linnophila	Torpedograss
Parrotfeather	Watermilfoil, variable-leaf
Pondweed, Illinois	Waterprimrose, creeping
Reed canarygrass	Waterpurslane
Salvinia	Watermeal, common†

Storage and Disposal

Non-refillable container. Do not reuse or refill this container. Offer for recycling, if available.

Pesticide Handling and Storage: Keep container stored with nozzle in closed position. Store product in original container in a safe place away from direct sunlight. Keep from freezing.

Pesticide and Container Disposal: If Empty:

Do not reuse this container. Place in trash or offer for recycling if available. **If Partly Filled:** Call your local solid waste agency for disposal instructions. Never place unused product down any indoor or outdoor drain.

† Partial control only when Sonar RTU is applied at the application rates recommended in Table 2, and at this higher rate all weeds in Table 3 & 4 will be controlled.

SePRO Family of Products

Visit the SePRO web site www.lakelawnpond.com to learn more about the SePRO family of products for the best solution to your toughest pond and lakeshore aquatic weed and algae problems.

Consumer Promise: 100% Satisfaction Guaranteed.



Warranty Disclaimer

SePRO Corporation warrants that the product conforms to the chemical description on the label and is reasonably fit for the purposes stated on the label when used in strict accordance with the directions, subject to the inherent risks set forth below.

SEPRO CORPORATION MAKES NO OTHER EXPRESS OR IMPLIED WARRANTY OF MERCHANTABILITY OR FITNESS FOR A PARTICULAR PURPOSE OR ANY OTHER EXPRESS OR IMPLIED WARRANTY.

Inherent Risks of Use

It is impossible to eliminate all risks associated with use of this product. Plant injury, lack of performance, or other unintended consequences may result because of such factors as use of the product contrary to label instructions (including conditions noted on the label such as unfavorable temperatures, soil conditions, etc.), abnormal conditions (such as excessive rainfall, drought, tornadoes, hurricanes), presence of other materials, the manner of application, or other factors, all of which are beyond the control of SePRO Corporation as the seller. All such risks shall be assumed by buyer.

Limitation of Remedies

The exclusive remedy for losses or damages resulting from this product (including claims based on contract, negligence, strict liability, or other legal theories) shall be limited to, at SePRO Corporation's election, one of the following:

- (1) Refund of purchase price paid by buyer or user for product bought, or
- (2) Replacement of amount of product used.

SePRO Corporation shall not be liable for losses or damages resulting from handling or use of this product unless SePRO Corporation is promptly notified of such losses or damages in writing. In no case shall SePRO Corporation be liable for consequential or incidental damages or losses.

The terms of the *Warranty Disclaimer* above and this *Warranty Disclaimer* cannot be varied by any written or verbal statements or agreements. No employee or sales agent of SePRO Corporation or the seller is authorized to vary or exceed the terms of the *Warranty Disclaimer* or *Limitations of Remedies* in any manner.