

U.S. Department of Energy
Savannah River Site
Strategic Plan

May 2009



For information regarding this publication, please contact:

Office of the Assistant Manager for Integration and Planning

U.S. Department of Energy – Savannah River Site

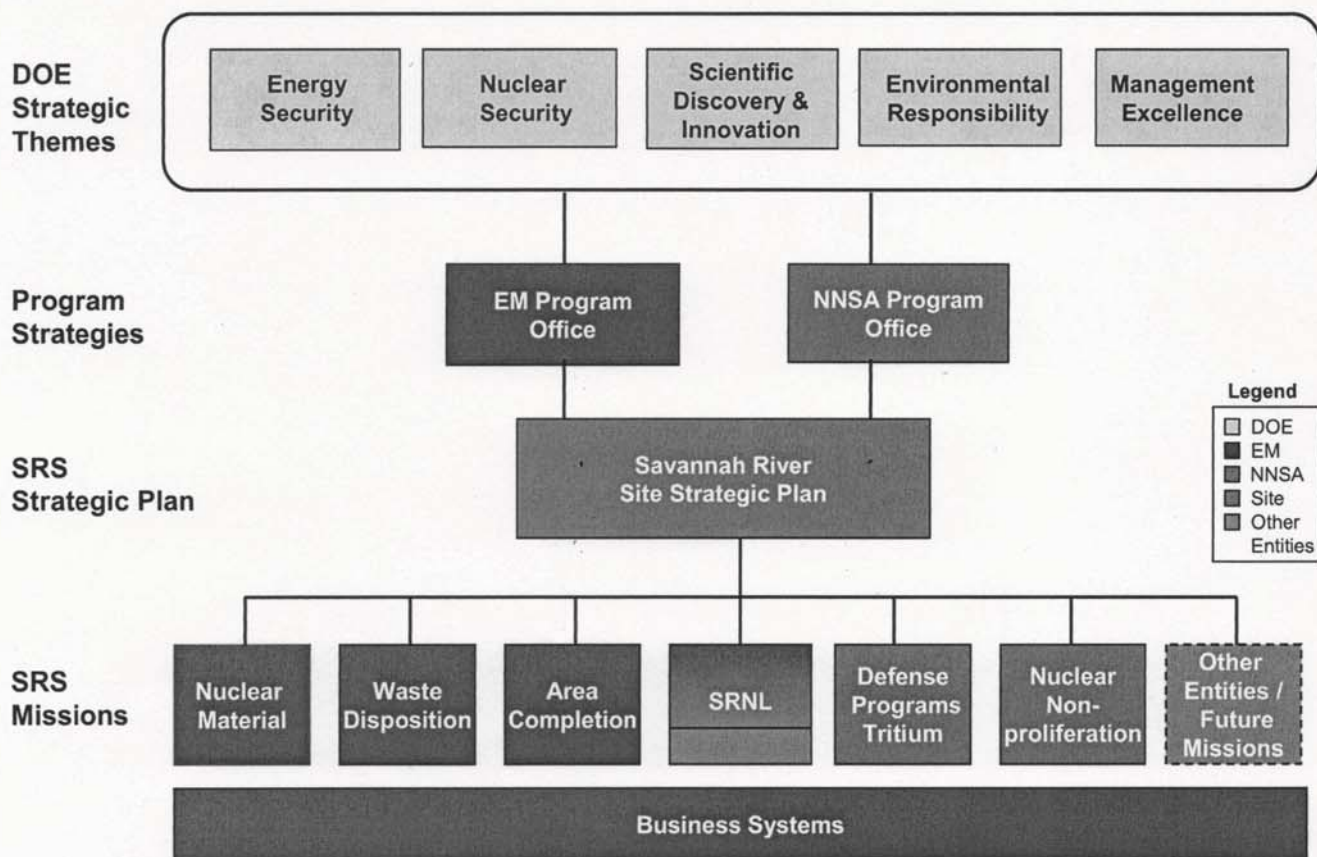
P.O. Box A; Bldg. 730-B; Aiken, SC 29801

2. Alignment with the DOE Strategic Plan

The *DOE Strategic Plan* is organized around five basic themes which define and address the missions of DOE. Correlated with these themes are major goals which provide direction to the various departmental organizations for accomplishing the mission functions. In line with the *DOE Strategic Plan*, each of the major DOE program offices develop organizational plans or guidance documents to further define how they will implement their particular mission assignments. The *DOE Strategic Plan* and these organizational sub-plans provide guidance for specific SRS actions.

SRS has designed its strategic plan to form a linkage with each of the DOE Strategic Themes. SRS has also identified each of the DOE Strategic Goals which have specific applicability to SRS. The *SRS Strategic Plan* addresses each of these goals to serve as the foundation that guides SRS activities.

SRS Strategic Plan Linkage to DOE Strategic Themes



3. Site Description and Past Achievements

SRS has over fifty years of operating experience and human resources with exceptional technical knowledge. The “can do” culture of the workforce has produced a legacy of achievement with unmatched safety and mission performance, resulting in a positive relationship with regulators, stakeholders, including the 25-member Citizens Advisory Board (CAB), and regional elected officials. This combination of attributes makes SRS a prime location for supporting a wide range of DOE and other national interests. SRS has many attributes, the sum of which make it a valuable and irreplaceable national asset. It has immense land resources, thousands of buildings, some with unique capabilities not available at any other location in the world, and a large supporting infrastructure. It is located on a 310 square mile parcel in South Carolina, bordered to the west by the Savannah River and Georgia.

EM is assigned as the Site’s landlord, with specific responsibilities that include Site-wide integration and planning, and implementation of projects in the areas of waste disposition, nuclear materials, and area completion. NNSA is one of the primary SRS tenants, and its missions include support for the Defense Program and Nuclear Nonproliferation project. SRNL, also located on SRS, provides support for SRS and DOE Complex-wide missions. It also performs work-for-others, including support for federal agencies such as the Department of Defense and Department of Homeland Security, as well as initiatives for organizations like the Center for Hydrogen Research.

Contractors operating at SRS include: Savannah River Nuclear Solutions, LLC (SRNS); Savannah River Remediation (SRR); Parsons Corporation; University of Georgia; Savannah River Ecology Laboratory (SREL); Wackenhut Services, Inc. (WSI); Shaw AREVA MOX Services, LLC; and numerous subcontractors. The USDA Forest Service – Savannah River (USFS-SR) maintains an interagency agreement with SRS for management of the Site’s forests and wildlife.

